

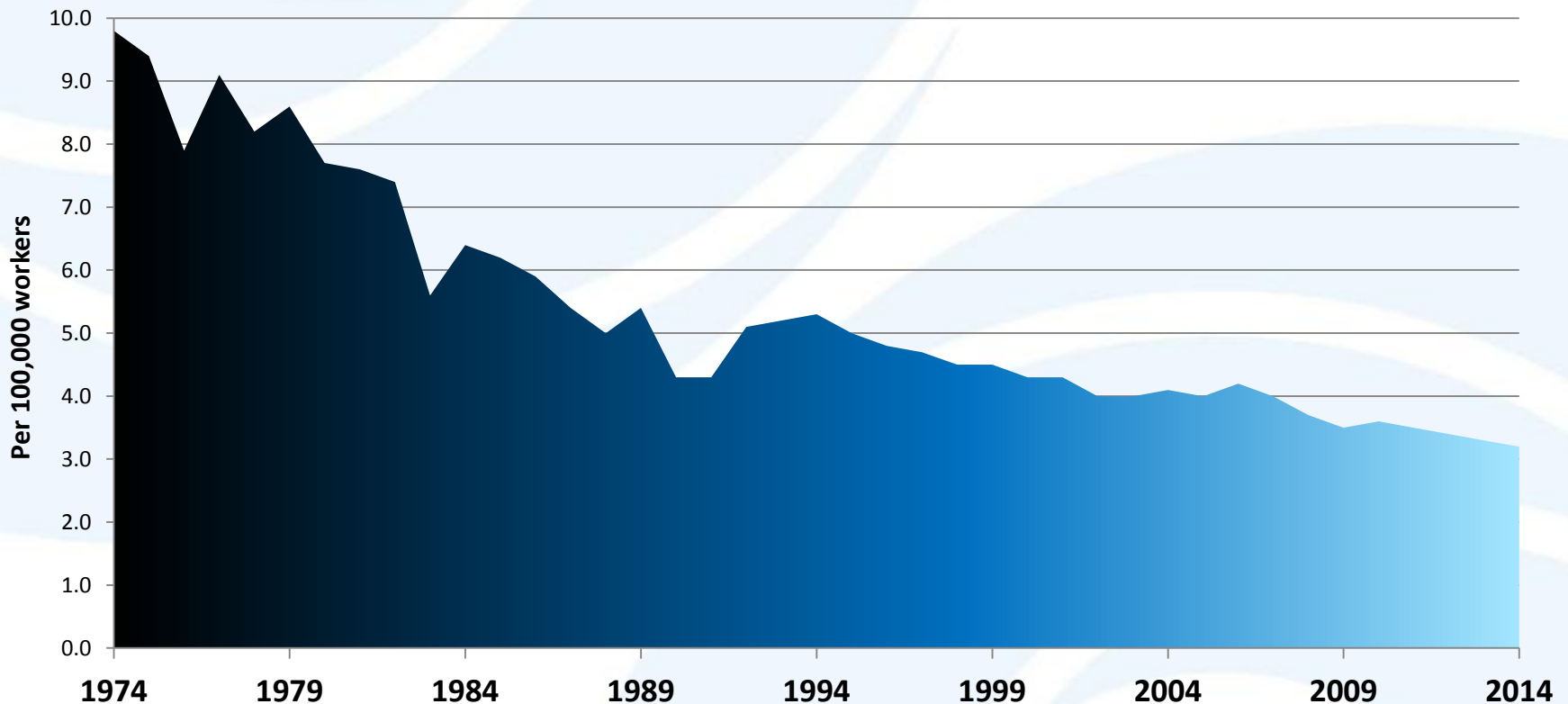
OSHA Update

Nancy Hauter

Deputy Regional Administrator
OSHA, Region V

Peoria, Illinois
March 2016

Rate of fatal workplace injuries



- 1974-2001 data were estimated from BLS Survey of Employers
- 2002-2013 data were gathered from BLS Census of Fatal Injuries
- In 2006, BLS switched from employment-based calculations to hourly calculations



Top Ten Violations

**Most frequently cited
OSHA regulations
during FY 2015
inspections**

1. Fall Protection
2. Hazard Communication
3. Scaffolding
4. Respiratory Protection
5. Lockout/Tagout
6. Powered Industrial Trucks
7. Ladders
8. Electrical – Wiring Methods
9. Machine Guarding
10. Electrical – General Requirements



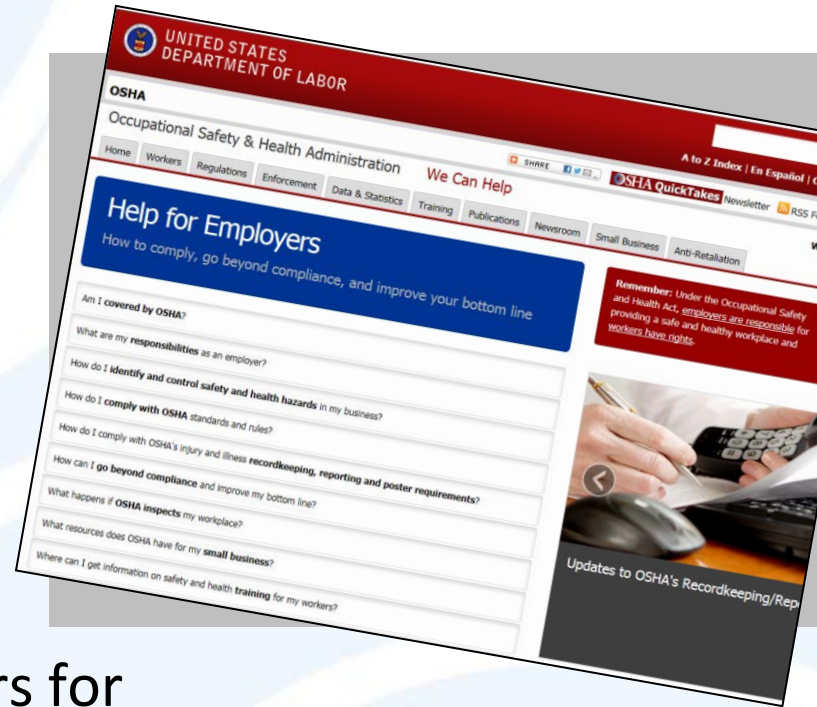
OSHA's Continuing Mission

- Every year more than **4,000** Americans die from workplace injuries.
- Perhaps as many as **50,000** workers die from illnesses in which workplace exposures were a contributing factor.
- **Millions** of workers suffer a serious nonfatal injury or illness annually.



Employer Responsibility

- **OSH Law:** Workplace safety and health is the responsibility of **employers**
- **Cornerstone: Prevention**
- **Set the tone:** Make safety and health a workplace **priority**
- **Right incentives:** Reward workers for showing initiative, **raising safety concerns**, and participating in prevention efforts

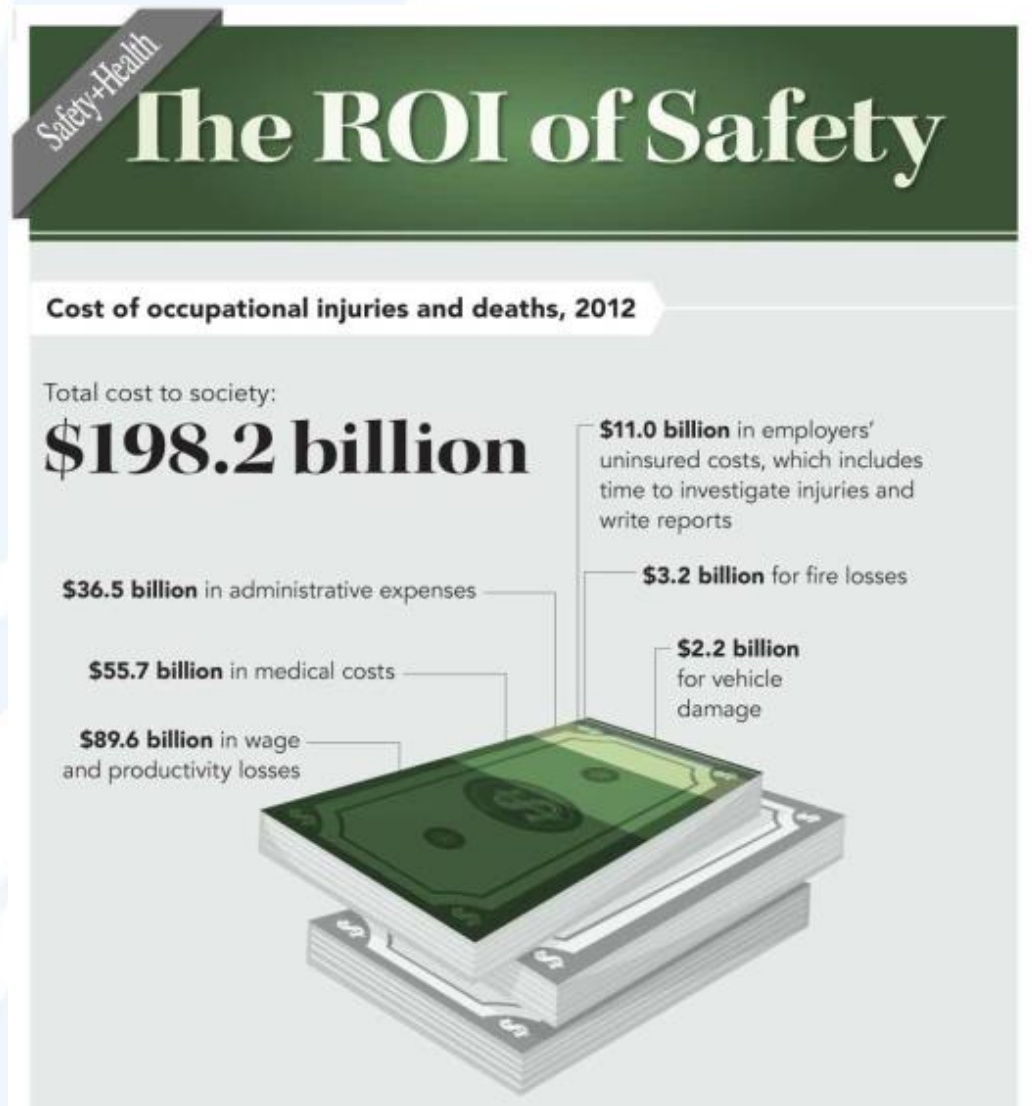


[osha.gov/employers](https://www.osha.gov/employers)

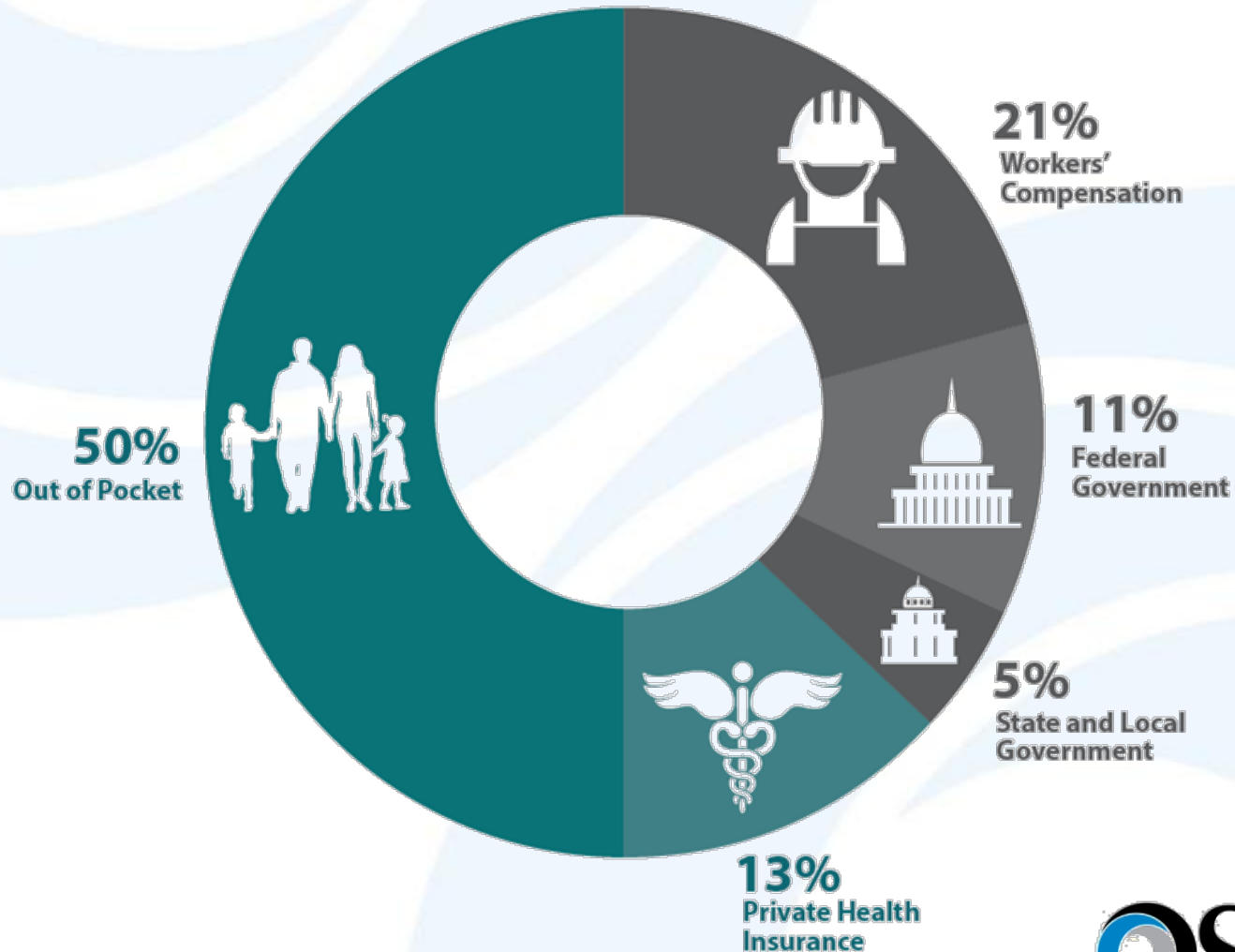


**Workplace injuries
and fatalities
cost our economy
\$198.2 billion
a year.**

— National Safety Council
“Injury Facts” 2014



Who bears the cost of worker injuries?



The Value of PREVENTION

- **saves lives**
- **prevents injuries**
- **saves you money**

Will Compliance with OSHA Regulations Make My Workplace Safe?

Safer, but not Safe!

Some fatalities and serious injuries will *not* be prevented by simply complying with OSHA regulations

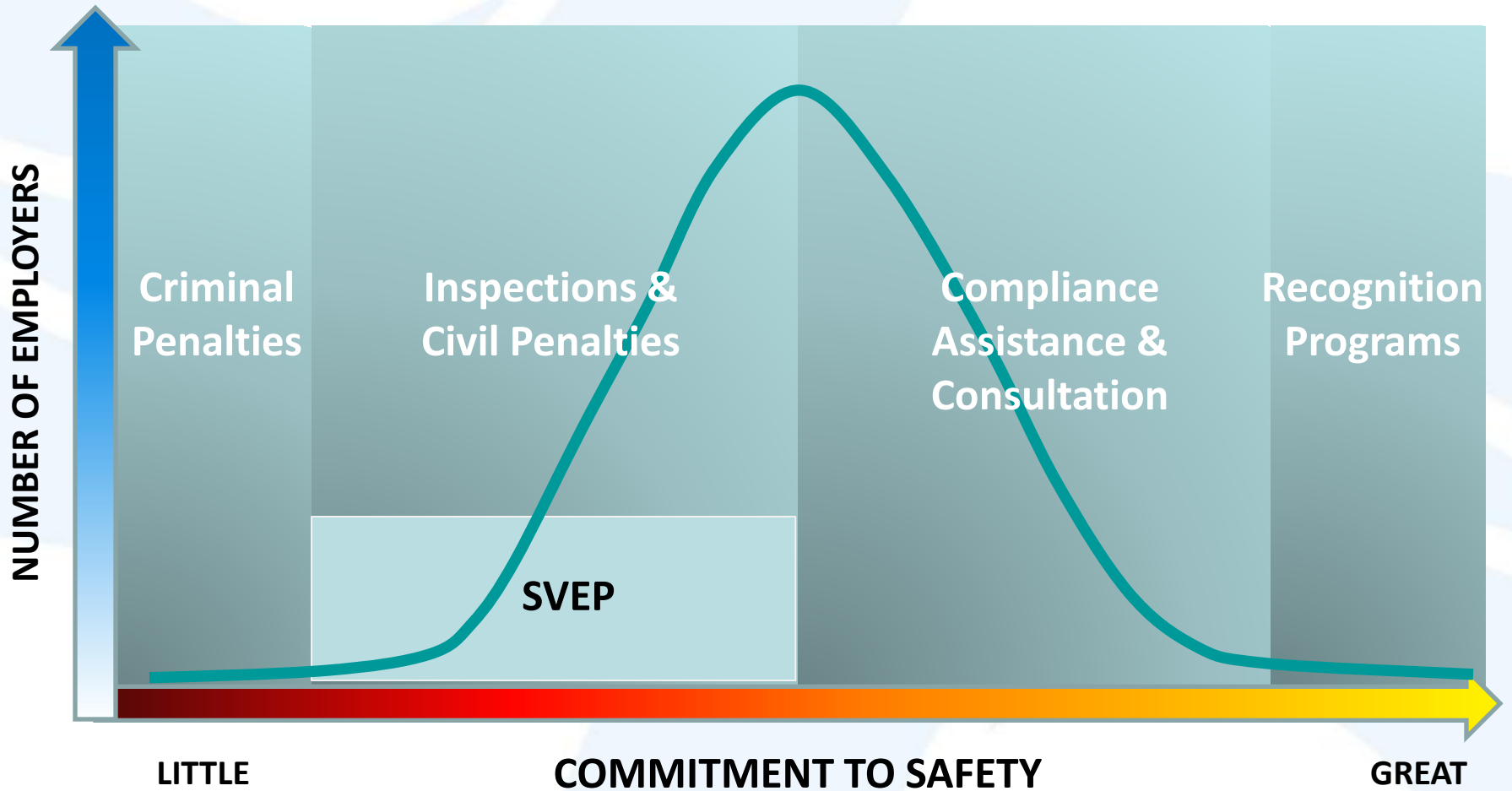


WHY?

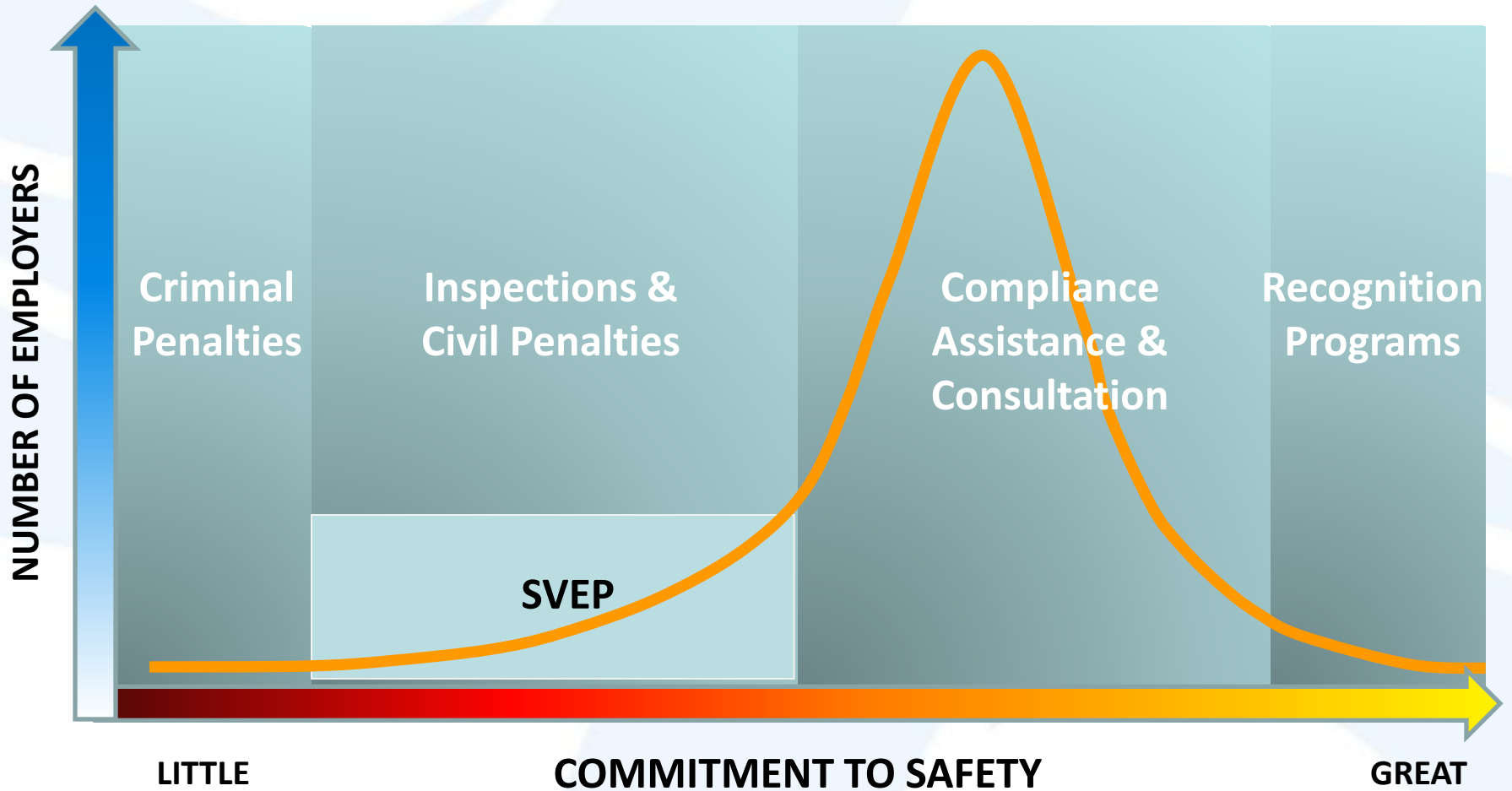
- **OSHA regulations don't cover all hazards**
(In some cases, not even the big ones)
- **Many OSHA standards are out of-date**
- **Regulations can't address every situation**



Distribution of Employers, by Commitment to Workplace Safety



Distribution of Employers, by Commitment to Workplace Safety



Safety & Health Program Management Systems

Six Core Elements

- Management leadership
- Worker participation
- Hazard identification and assessment
- Hazard prevention and control
- Education and training
- Program evaluation and improvement



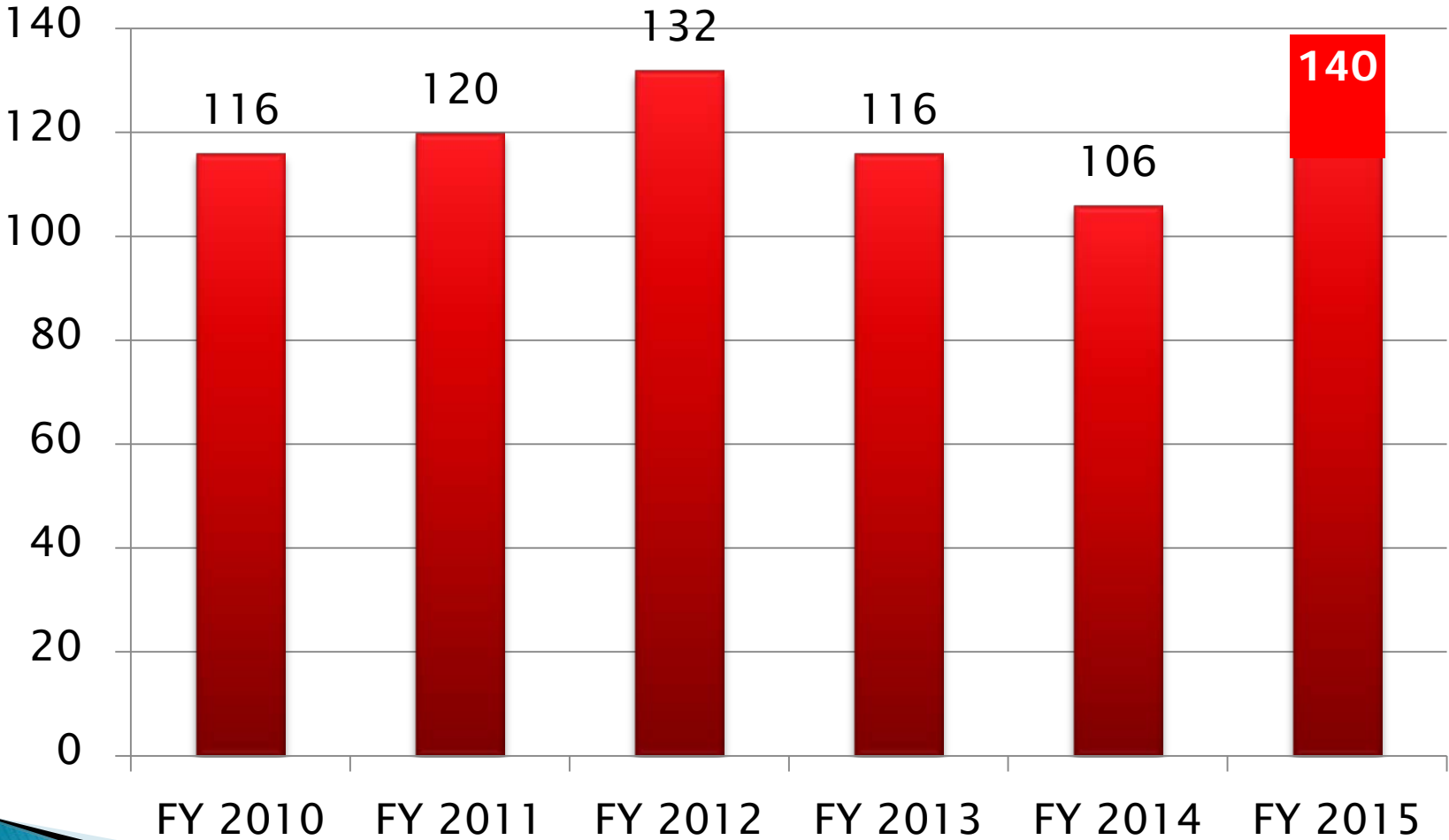


SHMS Program Guidelines

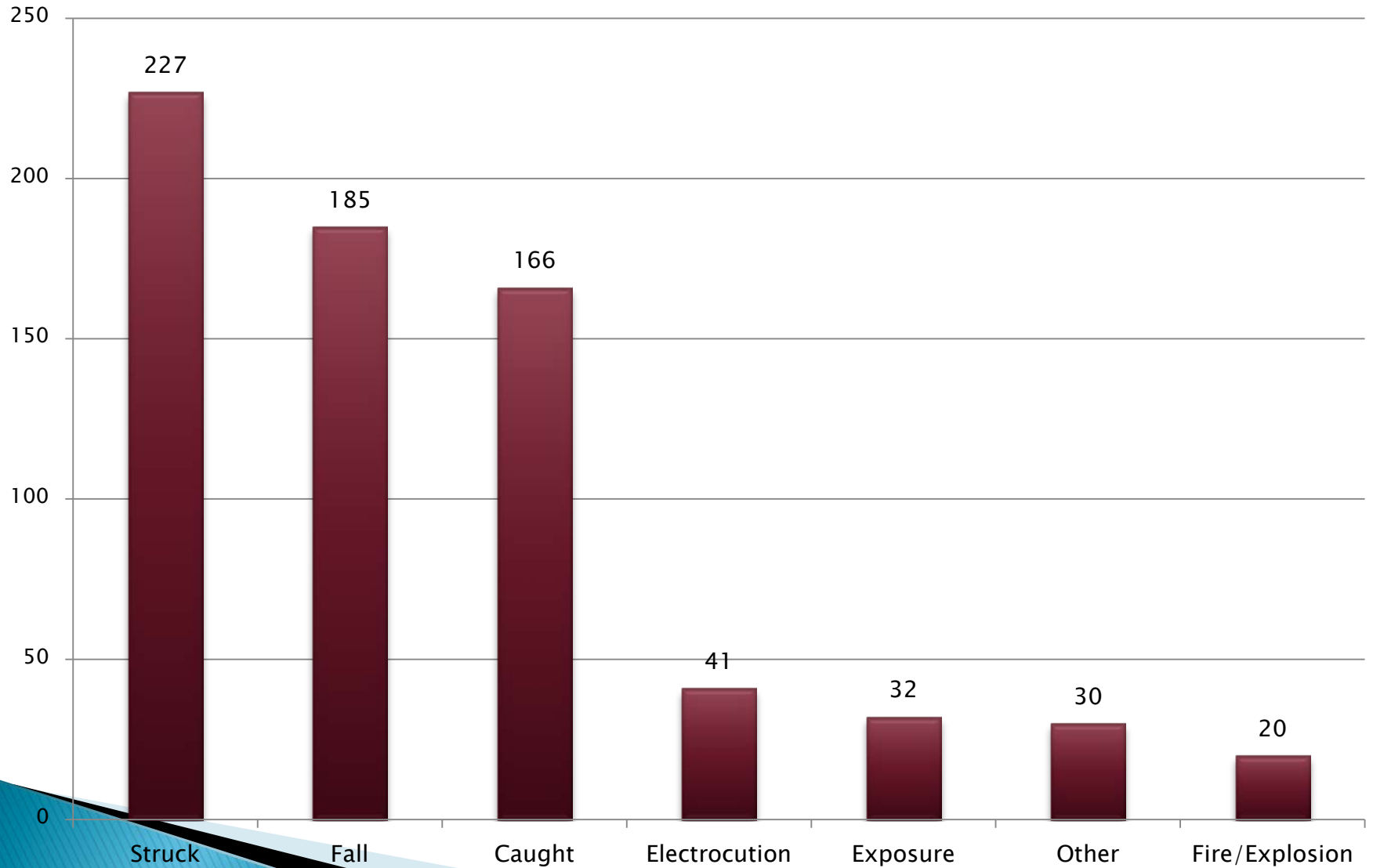
- Updating 1989 Safety and Health Program Management Guidelines
 - Building on lessons learned about successful approaches and best practices under OSHA programs such as VPP and SHARP.
- Will be supported by a series of tools to help employers implement:
 - an employee reporting tool
 - a benchmarking tool
 - a model program tool
 - a hazard identification checklist
 - a model incident investigation tool
 - an audit tool
- November 2015 – draft published; open for comment till February 15, 2016: <http://www.osha.gov/shpmguidelines/index.html>



FY 2010 – FY 2015 Region V Fatalities

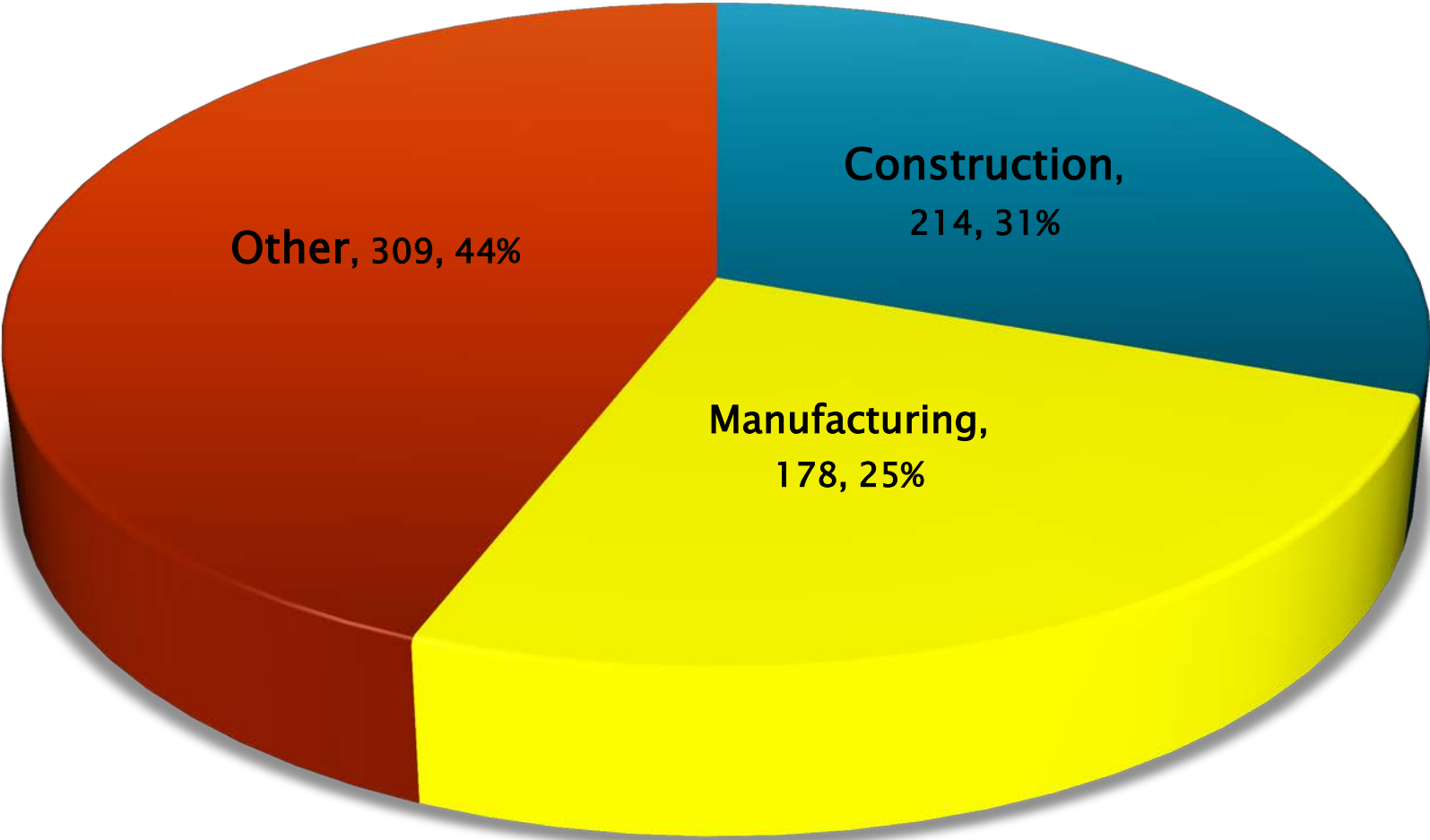


Region V Fatalities by Event FY 2010 – FY 2015



Region V Fatalities by Industry

FY 2010 – FY 2015




Report a fatality or severe injury

- All employers are required to notify OSHA when an employee is **killed** on the job or suffers a work-related **hospitalization, amputation, or loss of an eye**.
- A fatality must be reported **within 8 hours**.
- An in-patient hospitalization, amputation, or eye loss must be reported **within 24 hours**.



Confined Spaces in Construction

- Standard published on May 4, 2015
 - Standard went into effect August 3, 2015
 - OSHA postponed full enforcement of the standard for a 60 day period until October 2, 2015
 - During 60 day period OSHA did not issue citations to an employer making good faith efforts to comply with the new standard and in compliance with the training requirements of the new standard
- 

Silica

- ▶ Silica Proposed Rule
 - Final Rule to be issued Mid-2016?
 - Proposed Action Level of 30 ug/m³
 - Proposed PEL of 50 ug/m³
 - The proposed standard will likely follow the same formats as other expanded standards.

Rise of temp and contract workers

- **3 million people are employed by staffing companies every week.**
- **11 million temporary and contract employees are hired by U.S. staffing firms over the course of a year.**

Why Are Temp Workers At High Risk of Injury?

- **New workers** are at **increased risk** of injury
- Host employers don't have the same **commitment** to temporary employees as to permanent ones
- Employer who **bears the risk** of the injury (temp agency) **does not control** safety and health investment



Protecting Temporary Workers:

A joint responsibility

- **Both host employers and staffing agencies** have roles in complying with workplace health and safety requirements and they share responsibility for ensuring worker safety and health
- Legally, **both the host employer and the staffing agency** are employers of the temporary worker

Shared control over worker = Shared responsibility for worker



Temporary Workers: Outreach & Education

- Alliance with American Staffing Association
- Issued Temporary Worker Recommended Practices
- Developing Compliance Assistance Bulletins



- ✓ **21 million** visitors to OSHA's website in FY 2015
- ✓ **251,000** responses to OSHA 1-800 calls for help
- ✓ **21,000** Spanish-speaking callers helped
- ✓ **16,000** e-mail requests for assistance answered
- ✓ **5,000** outreach activities by Regional & Area Offices
- ✓ **27,800** small businesses helped through Consultation



Fall Prevention Campaign

- Falls are **leading cause of deaths** in construction — over 1/3 of all construction fatalities
- In 2014, almost **350 construction workers** were killed at work from falls to lower levels
- Millions of employers and workers participate in annual **Stand-Down to Prevent Falls** events nationwide
- The week of May 1, 2016





Workers' Rights: It's The Law!

New poster helps ensure that workers have a voice in their workplaces and the protection they deserve

- Available in 7 languages:
Spanish, Korean, Polish, Vietnamese, Nepali and Portuguese



OSHA'S Whistleblower Webpage

www.whistleblowers.gov



OSHA *QuickTakes*

- **Free** OSHA e-newsletter delivered twice monthly to more than 110,000 subscribers
- **Latest news** about OSHA initiatives and products to help employers and workers find and prevent workplace hazards
- Sign up at www.osha.gov

